

LS-7 with 5 Amp Relay

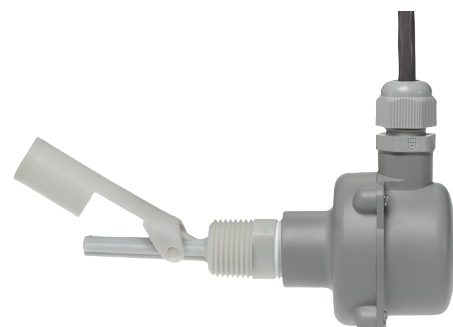
▶ O-Ring Sealed, Water Resistant J-Box

An SPDT relay enables this LS-7 to control two independent loads up to 5 amps each. Switching N.O. for one load and N.C. for the other. This unit is designed to operate with a load connected to each of the two outputs. These loads must be 10 watts, minimum, for correct SPDT switching. One load used alone must be connected to the N.O. terminal. With this load, which may be less than 10 watts, the unit will operate the same as an SPST unit.

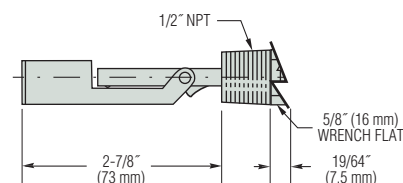
Specifications

Wetted Materials	Polypropylene
Min. Liquid Specific Gravity	0.55
Operating Temperature	-40°F to +250°F (-40°C to +121°C)
Operating Pressure	100 psi @ 70°F, max.
Float Arc Envelope	1.50"
J-Box with 5A Relay	120 VAC 50/60 Hz Contacts: 5A – 240 VAC Res 1/3 HP – 120 VAC 5A – 28 VDC Res

Order by Part Number: 181291



Dimensions



LS-1 – Miniature Level Switch

- ▶ Extremely Compact
- ▶ Easy Installation
- ▶ Low Cost

This miniature level switch feature an all-polypropylene stem and float construction for broad chemical compatibility. Fluted stem resists solids build-up. Float is held in place with integral stem tangs, which simultaneously eliminates a separate retaining ring and makes inverting the float for reversing switch actuation very easy.

Specifications

Wetted Materials	Polypropylene
Stem and Float	Polypropylene
O-Ring	EPDM
Mounting Threads	M8 x 1.25"
Min. Liquid Specific Gravity	0.70
Operating Temperature	0°F to 175°F (-17°C to +79°C)
Operating Pressure	0 to 5 psig (0 to 0.3 bar)
Electrical Termination	22 AWG, 6"-8" PVC Jacketed Lead Wires (Black)
Switch Operation	N.O. Dry (May be converted to N.C. Dry by inverting float on stem)
Mounting Attitude	Vertical with lead wires up.

Order by Part Number: 602881



Dimensions

