

Type 680

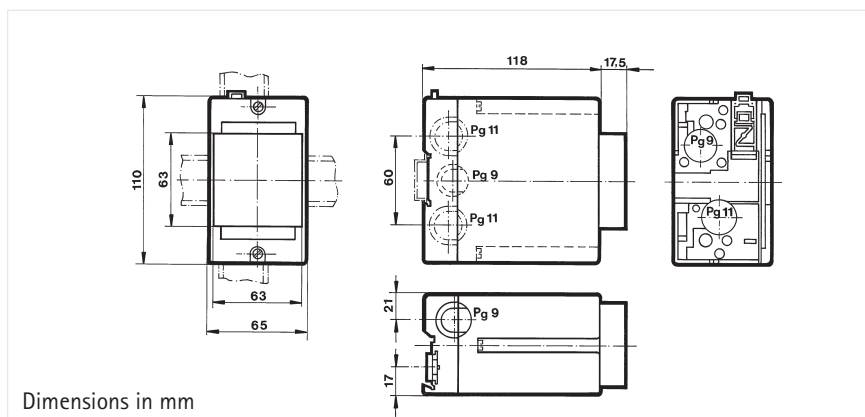


TECHNICAL DATA

- Attachment by means of 35 mm DIN rail or with screws
- Case made of insulating material
- Installation of counters of the modular system 400 in protective case size 2

Case	ABS plastic
Colour	grey
Resistance to heat	up to 85 °C
Burning properties	VDE 0304 part 3/5.70, degree IIIa
Mounting	- snap-on attachment to 35 mm DIN rail (DIN 46277/DIN EN 5022), lengthwise or crosswise
Connection	- screw-mounting 2 x M4 or M5 by cable, cable inlet with PG-cable gland or feed-through

DIMENSIONED DRAWING



ORDER INFORMATION

Case (without counters) Ordering code 1 680 089

Delivery includes case compl. with protective case size 2 (12-way connectors) without counters.