

Size 15 HaroMax

Harowe™ brand

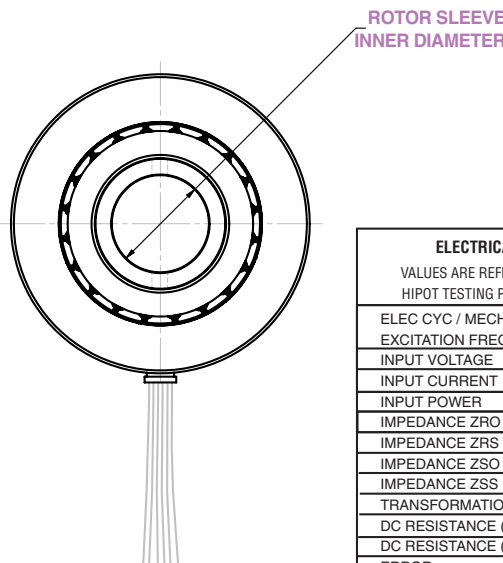
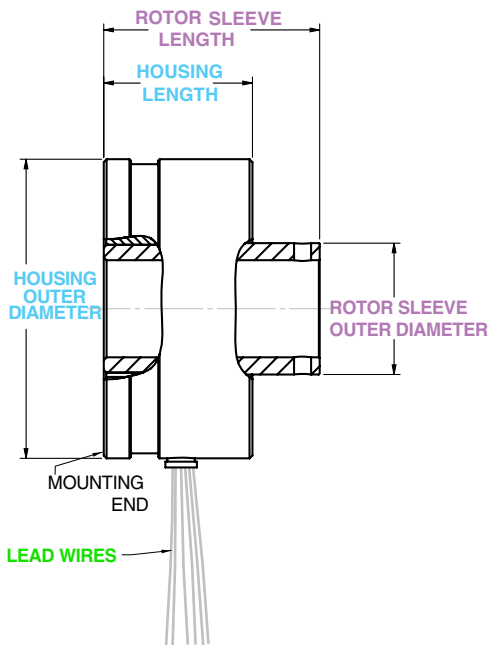
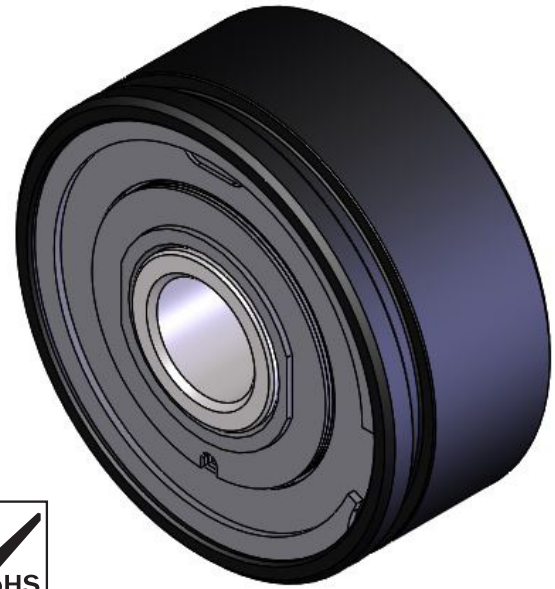
Heavy Duty Brushless Resolvers

Key Features

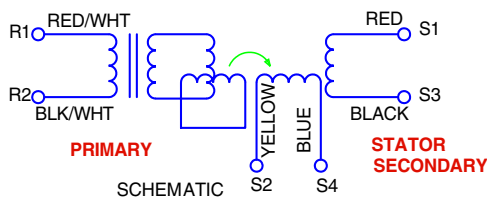
- Frameless size 15 Servo Mounting
- Anodized Aluminum Housing with Low Mass
- Machine Wound Stator for High Accuracy

Provides absolute position and/or velocity feedback for brushless motors, robots, servos, precision rotary platforms and many other applications where high temperature, shock and vibration are a problem for less robust feedback products.

Because of its simple transformer design and lack of any on-board electronics, the resolver is a sensible choice for many aerospace, military, steel and paper mills and radioactive applications where reliable performance is required.



PHASING



ELECTRICAL & MECHANICAL DATA AT 25°C	
VALUES ARE REFERENCE UNLESS OTHERWISE TOLERANCED	
HIPOT TESTING PERFORMED AT 60HZ, 4 SECOND DURATION	
ELEC CYC / MECH CYC	deg/deg
EXCITATION FREQUENCY	±1% kHz
INPUT VOLTAGE	±5% V rms
INPUT CURRENT	Max. mA rms
INPUT POWER	Watts
IMPEDANCE ZRO	Ohms
IMPEDANCE ZRS	Ohms
IMPEDANCE ZSO	Ohms
IMPEDANCE ZSS	Ohms
TRANSFORMATION RATIO	Min. to Max.
DC RESISTANCE (R1-R2)	Ohms
DC RESISTANCE (S1-S3, S2-S4)	Ohms
ERROR	±Max. arcminutes
PK-PK POSITION ERROR	Max. arcminutes
PK-PK VELOCITY ERROR	Max. %
PHASE SHIFT, OPEN CIRCUIT	degrees
NULL VOLTAGE	Max. mV rms
HIPOT, LEADS TO CASE, 500VAC	Max. mA rms
HIPOT, INTERPHASE, 250AC	Max. mA rms
TEMPERATURE RANGE	°C
WEIGHT	oz
CONTINUOUS SPEED	Max. kRPM

Size 15 HaroMax

Harowe™ brand

15BRX - **700** - **B** **10** **B** **A**

FAMILY TYPE	
15BRX	1.5 inch OD - Rotor Primary

Code	HOUSING MOUNT - MATERIAL - LENGTH - PILOT
700	Servo Groove - Aluminum - 1.0 inch long with 1.449 inch pilot

Input Excitation						
Code	Vrms	KHz	mA	TR	Speed	Accuracy
B	2	10	50	0.98	1	20 arcmin spread
D	8	8	50	0.50	1	16 arcmin spread
F	4	5	45	0.50	1	20 arcmin spread

Code	ROTOR BORE	LENGTH
10	3/8 inch	0.635 inch
14	3/8 inch w/flat	0.635 inch
46	12 mm	16 mm

Code	LEADS - CABLES - SPECIAL FEATURES
B	28AWG Flying Leads
F	28AWG Cable - 3 Twisted pairs w/Drain
J	24AWG Cable - 3 Twisted Pairs
K	22AWG Cable - 4 Twisted & Shielded Pairs
S	29 AWG Siliflex Flying Leads

Code	LEADS/CABLE LENGTH
A	12 inches long
B	16 inches long
C	24 inches long
D	60 inches long
E	80 inches long
F	120 inches long

Please contact Customer Service for any options or features that are not available in the above Configurator.



WWW.DYNAPAR.COM

Headquarters: 1675 Delany Road • Gurnee, IL 60031-1282 • USA

Customer Service:
 Tel.: +1.800.873.8731
 Fax: +1.847.662.4150
 custserv@dynapar.com

European Sales Representative
 Hengstler GmbH
 Uhlandstrasse 49, 78554 Aldingen
 Germany
www.hengstler.com